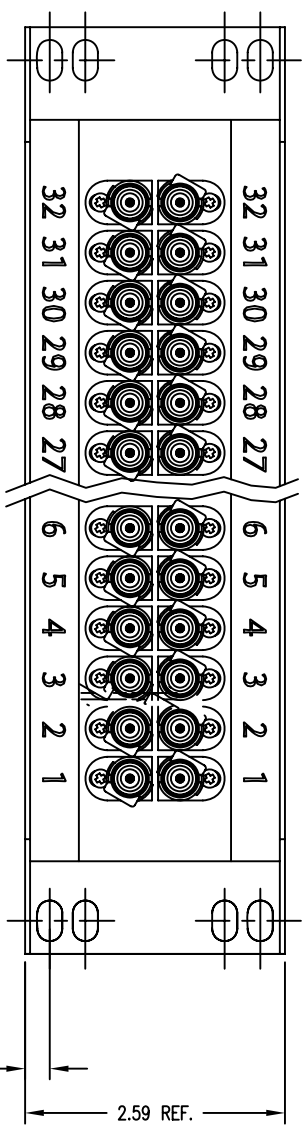
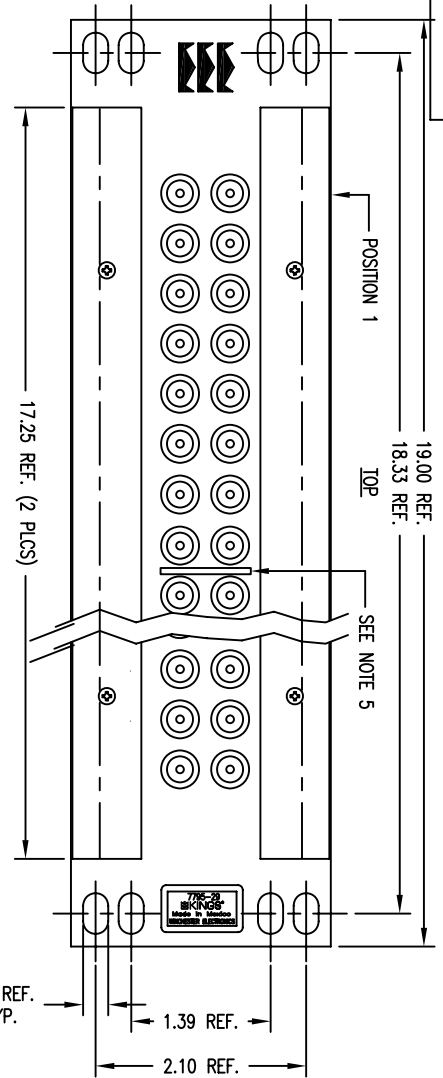


SCHEMATIC: SELF-TERMINATED MODE



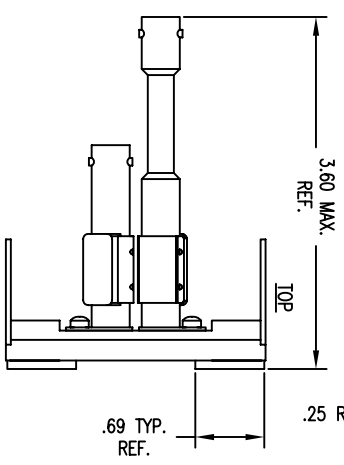
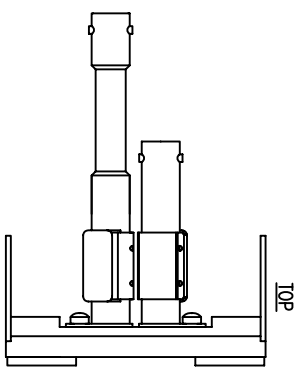
NOTES:
 32 EACH MIDSIZE SINGLE S.I. VIDEO JACK, P/MS 7772-3 (SHORT) & 7772-4 (LONG).

- MATERIALS:
 INSULATORS-TOPAS, ASTM-D-4894
 SPRING CONTACTS
 BNC CONTACT F } BER. COP., ASTM-B-196
 VIDEO CONTACT F }
 HARDWARE-ZINC PLATED MACHINE SCREW
 ALL OTHER METAL PARTS-BRASS, ASTM-B16
- FINISHES:
 CENTER CONTACT & SPRING BEAM-HARD GOLD PLATE PER ASTM-B488

- SPRING CONTACT-GOLD PLATE PER ASTM-B488, OVER COPPER STRIKE HARDWARE-PASSIVATE PER QQ-P-35 OVER KINGS BRIGHT NICKEL PLATE.
 ALL OTHER METAL PARTS-KINGS TARNISH RESISTANT FINISH (TR-5)
- LIFE CYCLES: 50,000 CYCLES MINIMUM.
- ELECTRICAL CHARACTERISTICS:
 NOMINAL IMPEDANCE: 75 OHMS
 RETURN LOSS: SELF-TERMINATED MODE
 1.5 GHZ, -20DB MINIMUM
 2.4 GHZ, -14DB MINIMUM
- IDENTIFICATION LINES POSITIONED BETWEEN THE 8TH & 9TH, 16TH & 17TH, AND 24TH & 25TH ROWS

- UNLESS OTHERWISE SPECIFIED
- ALL DIMENSIONS IN INCHES [MILLIMETERS];
 TOLERANCES: .XX ±.004 .XX ±.010
 [XXX ±.10] [XX ±.25]
 FRACTIONS: X/Y ±.010 [25] ANGLES: ± 1°
 - CRITICAL DIMENSIONS

- FRAME & MODULE ASS'Y:
- MATERIALS: LABEL COVER: LEXAN, COLOR: CLEAR
 SCREWS: BRASS, ASTM-B16
 ALL OTHER PARTS: COLD ROLLED STEEL
 SCREWS: BLACK OXIDE, MIL-F-495
 - FINISHES: ALL OTHER METAL PARTS: NICKEL PLATE PER QQ-N-290



SD7795-29

REVISIONS	
ISSUE	CHANGES
0	ER 39415 HVN 02/24/06
1	CN 39914 C DCT 5/1/7
C	ER 6249 BAM 02/01/08
D	ER 7524 BAM 05/05/08
E	ER 9402 RMS 07/31/08

CUSTOMER SALES DRAWING

SCALE 3/4:1

APPROX SURFACE AREA

USED ON

REF: JKFIELD, SINGLE VIDEO S.I.

DATE	02/23/06
DESIGN	HVN
DATE	02/23/06
APPR.	DCT
DATE	02/24/06

SD7795-29



SIZE B